

360°

for your cleaning  
business in  
air-conditioning  
systems


CATALOGUE

ENG

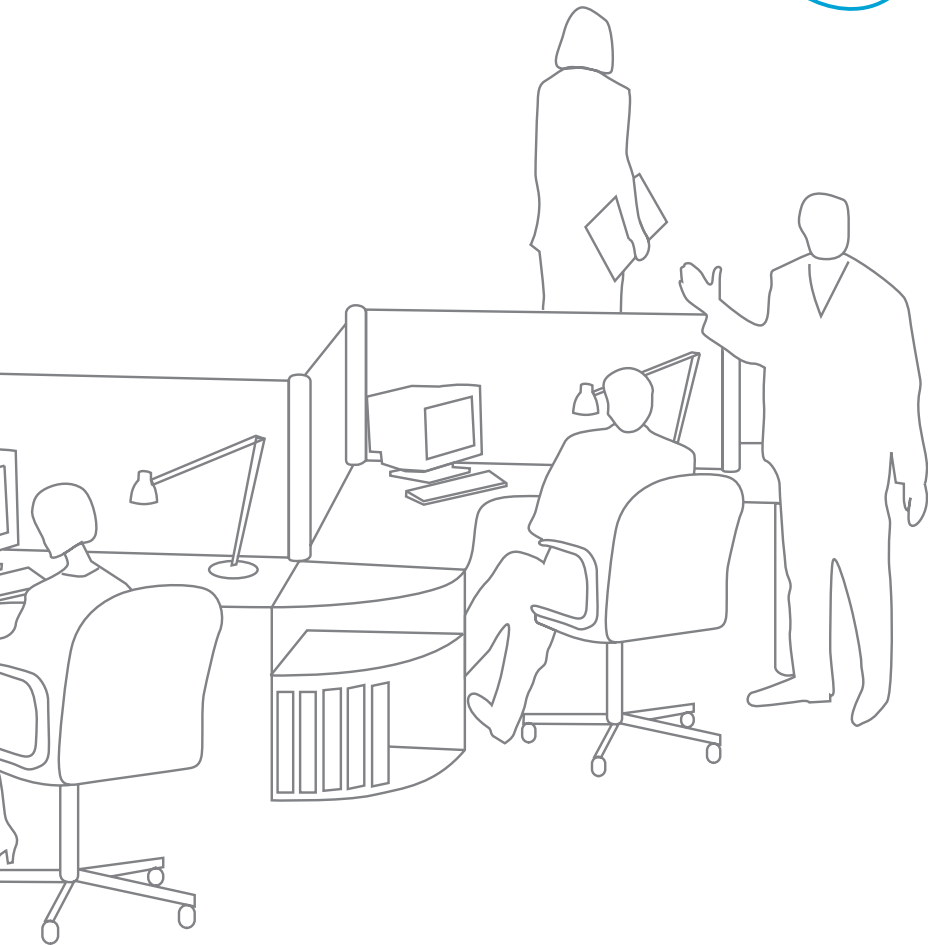
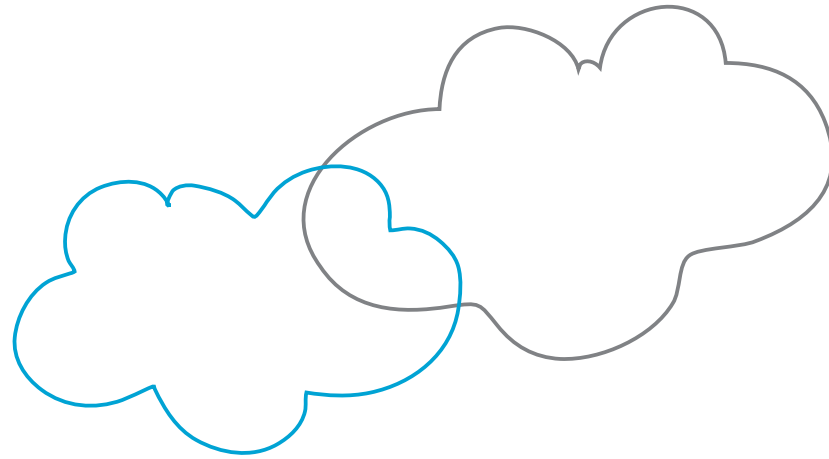
**TECai**  
concept



# index

	<b>01</b>	THE INDOOR AIR QUALITY
	<b>02</b>	THIS COULD BE YOUR OPPORTUNITY
	<b>03</b>	INSPECTION SYSTEMS FOR DUCTS
	<b>04</b>	PRESSURIZED AIR DUCT CLEANING
	<b>05</b>	BRUSHING ROBOTS FOR DUCT CLEANING
	<b>06</b>	VACUUM SYSTEMS FOR DUCT CLEANING
	<b>07</b>	AIR-CONDITIONING COILS CLEANING SYSTEMS
	<b>08</b>	ULTRASOUND CLEANING SYSTEMS FOR GRILLES AND DIFFUSERS
	<b>09</b>	DISINFECTING EQUIPMENT
	<b>10</b>	INDOOR AIR QUALITY MEASURING EQUIPMENT
	<b>11</b>	SPECIALIZED TRAINING PLANS

# 01



## INDOOR AIR QUALITY (IAQ)

Society is becoming more and more aware of the importance of breathing clean air which is free of pollutants, and particles, microbes, bacteria and other materials in suspension that can cause serious, and even chronic illnesses.

Fortunately, there is a general worldwide trend towards approving laws to regulate the maintenance and hygiene of air-conditioning systems.

The World Health Organization has defined the Sick Building Syndrome (SBS) as a group of conditions caused by the contamination of the air in enclosed spaces, which may be caused by particles in suspension, mould, microbes or bacteria. Proper maintenance of air-conditioning systems, based on current legislation is the best way to ensure the indoor air quality.

CONSIDER THESE FACTS

WE BREATHE ON AVERAGE

8.000

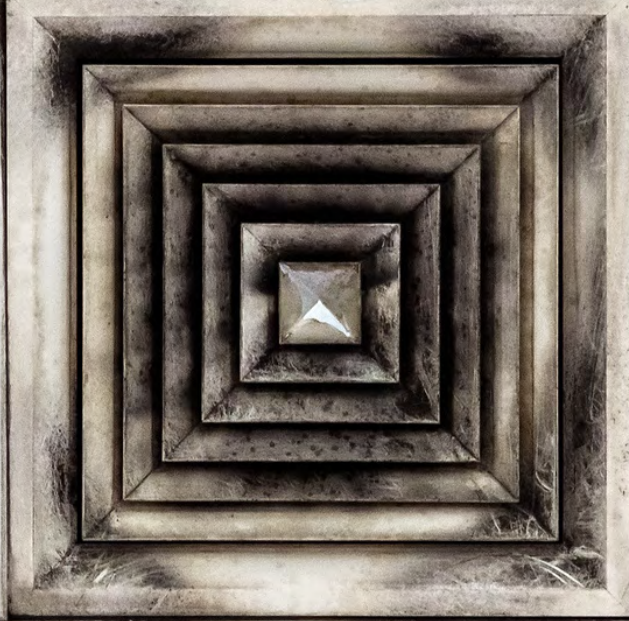
LITRES OF AIR EVERY DAY

90%

OF OUR TIME IS  
SPENT AT INDOOR  
SPACES

30%

OF BUILDINGS  
SUFFER THE  
SICK BUILDING  
SYNDROME



THE INDOOR AIR IS

10 TIMES MORE  
CONTAMINATED THAN  
THE OUTSIDE AIR

## THE INVISIBLE ENEMY

Millions of harmful micro-organisms are expelled through grilles of air-conditioning ducts, that can cause illness when they enter into our bodies.

# 02





## YOU CAN BE A HEALTHY INDOOR SUPPLIER

The ducts for ventilation and air-conditioning can accumulate large quantities of dirt, and are ideal places for aerobic organisms and mold to grow, leading to more than 38% of absences due to sickness and illnesses caused by respiratory conditions. The sanitation of these systems offers great advantages to your clients, such as:

- Guaranteeing the health of your on-site personnel
- Savings in maintenance and energy costs
- Compliance with the law

# REASONS FOR STARTING THIS BUSINESS



## THE MARKET

How many office buildings, official bodies, hospitals, schools, public and private companies are there in your country? According to the census of the National Statistics Institute there are over two million non-residential buildings in Spain. This enormous market requires services in relation with the Indoor Air Quality for compliance with current law, improve facilities performance, and due to health concern of the people using the buildings.



## THE BUSINESS

After studying this data, we can clearly state that the business of cleaning air-conditioning systems is in a phase of full expansion. This represents an opportunity for both entrepreneurs and cleaning or maintenance companies who want to expand or diversify their business activities. These services can be approached with different configurations of equipment adapted to the nature and scale of the installations, and which can incorporate the latest technical innovations.



## THE LAW

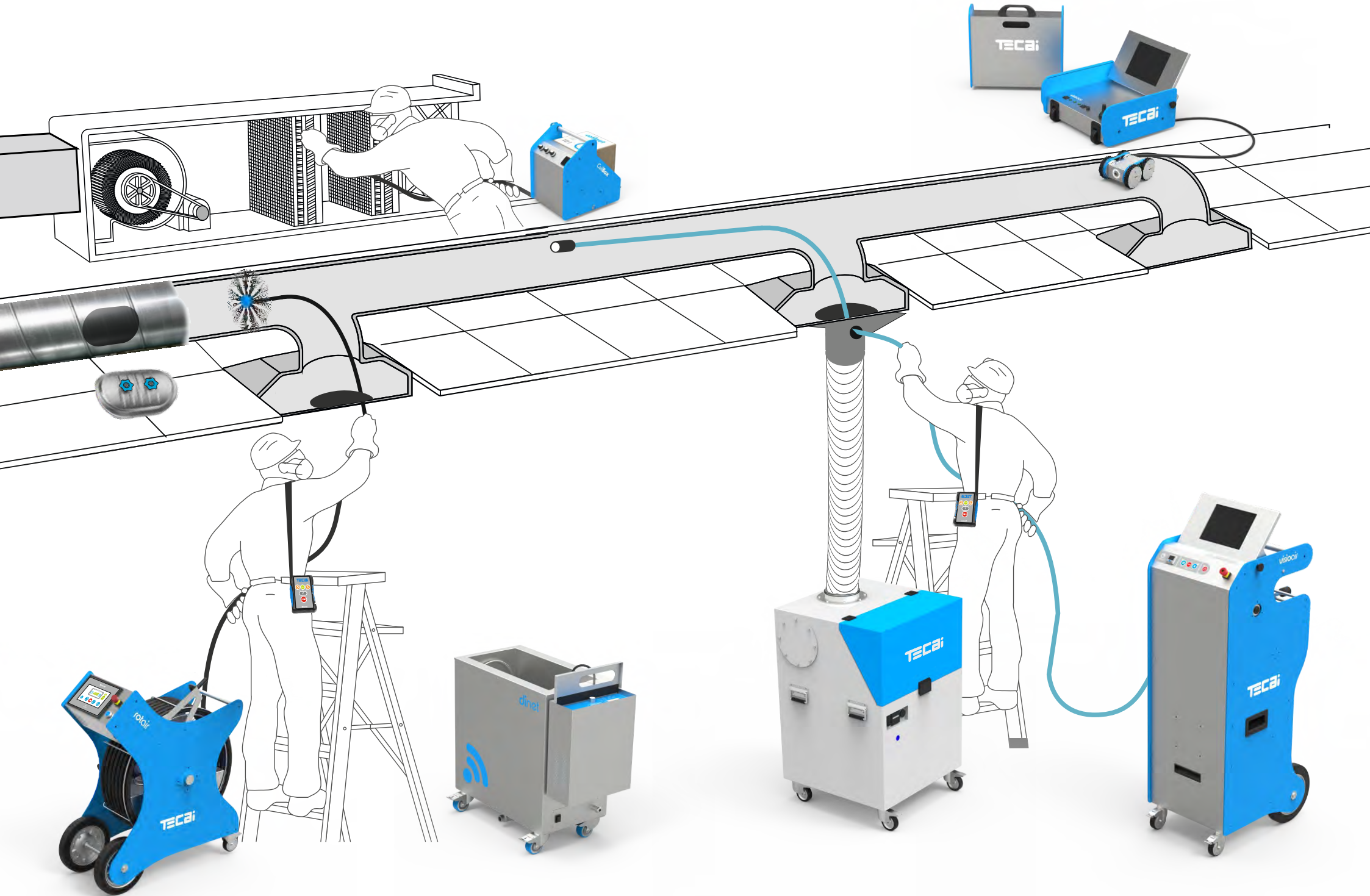
More and more countries are implementing laws to regulate cleaning and regular maintenance of air-conditioning systems.

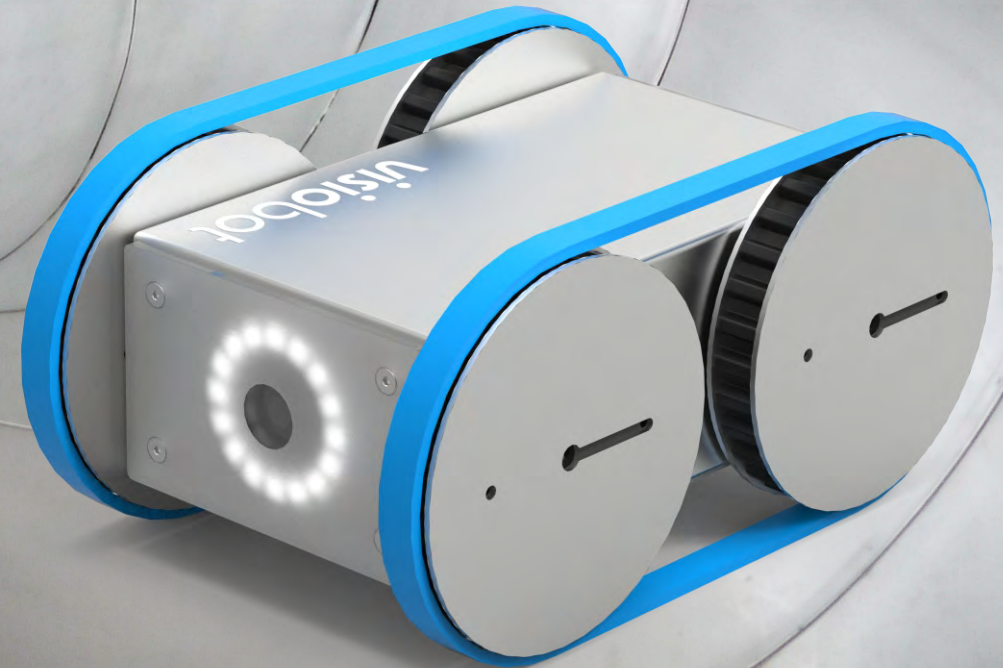




**TECAi**

360°  
Integral concept  
for HVAC  
cleaning





## SEEING IS BELIEVING

The interior of air-conditioning systems are "out of sight", so there is a need for an inspection system to assess and record conditions before and after cleaning. This will enable you to show your client the excellent results of the work carried out.

# visiobot



## Would you like to show your customers the importance of duct cleaning?

Visiobot is the tool you need. When duct cleaning is needed, we often put off this vital work because we cannot see the need, or it cannot be demonstrated. However, as stipulated in norms, inspection before and after cleaning work is necessary. This is why Visiobot is your perfect partner for justifying the need for work to be carried out.

## Robust and Reliable

When you need to inspect air-conditioning system ducts, you need a robust and reliable tool such as Visiobot. Its stainless steel structure protects robot internal technology. Non-Stop technology, due to the built-in batteries, allows you to work autonomously for more than 2 hours. It also has a battery status indicator to monitor its level at all times.

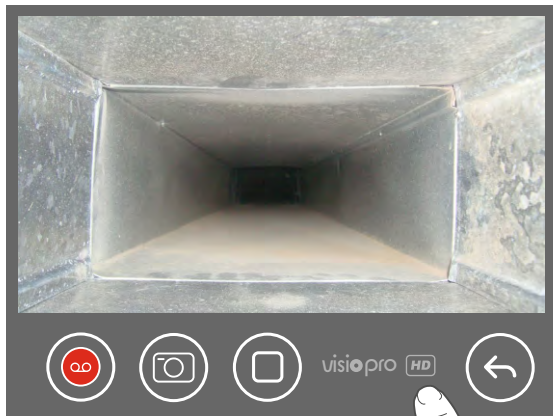
## How does it help you?

It reinforces the message for the client that cleaning is needed. It monitors all the recordings of the work and lets you keep a detailed record. It is the best partner before, during and after duct cleaning work. It lets your client to identify the problems inside the ducts. It never gets stuck, and can even go backwards. It lights up the most inaccessible corners.

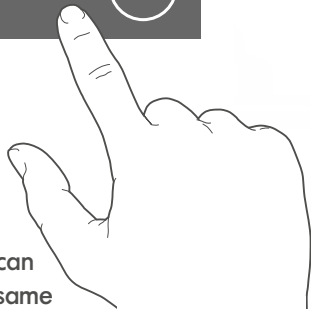




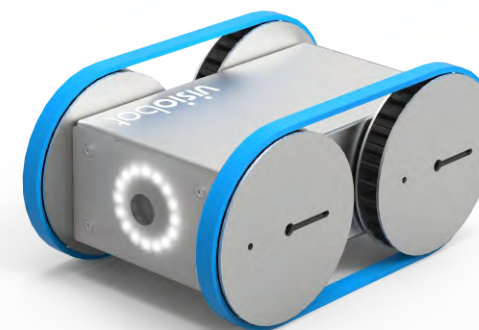
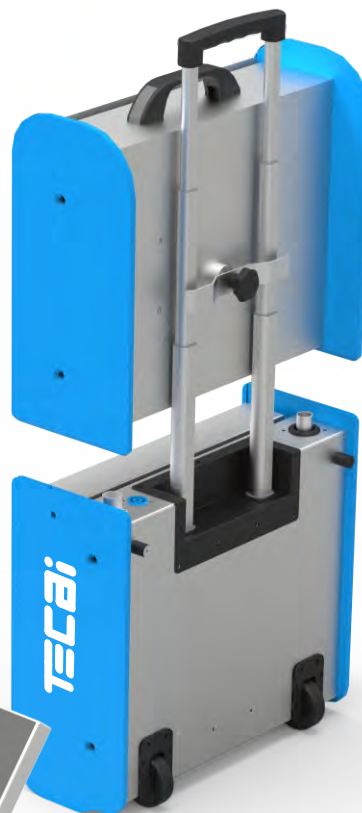
visio<sup>o</sup>pro



Latest technology viewing and recording images. It has an "easy touch" high resolution screen and captures videos and high definition images with text, data and time insertion. It can also play the recordings at the same time. Easy using interface and internal memory with high capacity.



Transport system with integrated trolley in control box. Attached suitcase for vehicle and cables housing.



visiobot

### TECHNICAL FEATURES

External Power Supply	220 V / 50Hz 110 V / 60Hz
Built-in battery	Lithium Ion Rechargeable Battery
Length of cable	20 mts / 65 ft
4 Wheels Traction	With high torque independent motors
Camera and lighting	High resolution (HD) with leds regulation
Total Weight	17 Kg / 37 lb
Robot Weight	2 Kg / 4,5 lb
Structure Material	Stainless Steel ABS
Robot Dimensions L x W x H	217 x 132 x 102 mm 8,6 x 5 x 4 pulg
Briefcase Dimensions L x W x H	414 x 180 x 386 mm 16 x 7 x 15 pulg



04



# visioair

## Intelligent cleaning. A need made reality

Cleaning of ducts in air conditioning systems can become a difficult task, for which it may demand many resources, time and personnel. This happens especially when we are faced with the cleaning of duct works in hospitals, malls, office blocks or buildings of considerable dimensions.

When we need the highest level of technology for the cleaning of kilometeric dimensions, in which one of the most important factors for decision making is the price of duct cleaning, it is clear that your best tool is Visioair.

## Fast, affordable and effective

Do you need the maximum competitiveness when you present an offer to your customer for the air-conditioning duct cleaning? Do they also request the maximum guarantees? The system for cleaning air-conditioning ducts by air injection, trapping the dirt adhering to the tubes and at the same time displays, records and verifies cleaning by means of a micro-camera installed in an intelligent head.

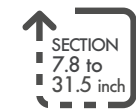
Through its perimeter cleaning technology, it runs the full length of the duct, removing and sending all the particles of dust and dirt to the suction sleeve connected to the Hepair vacuum systems.





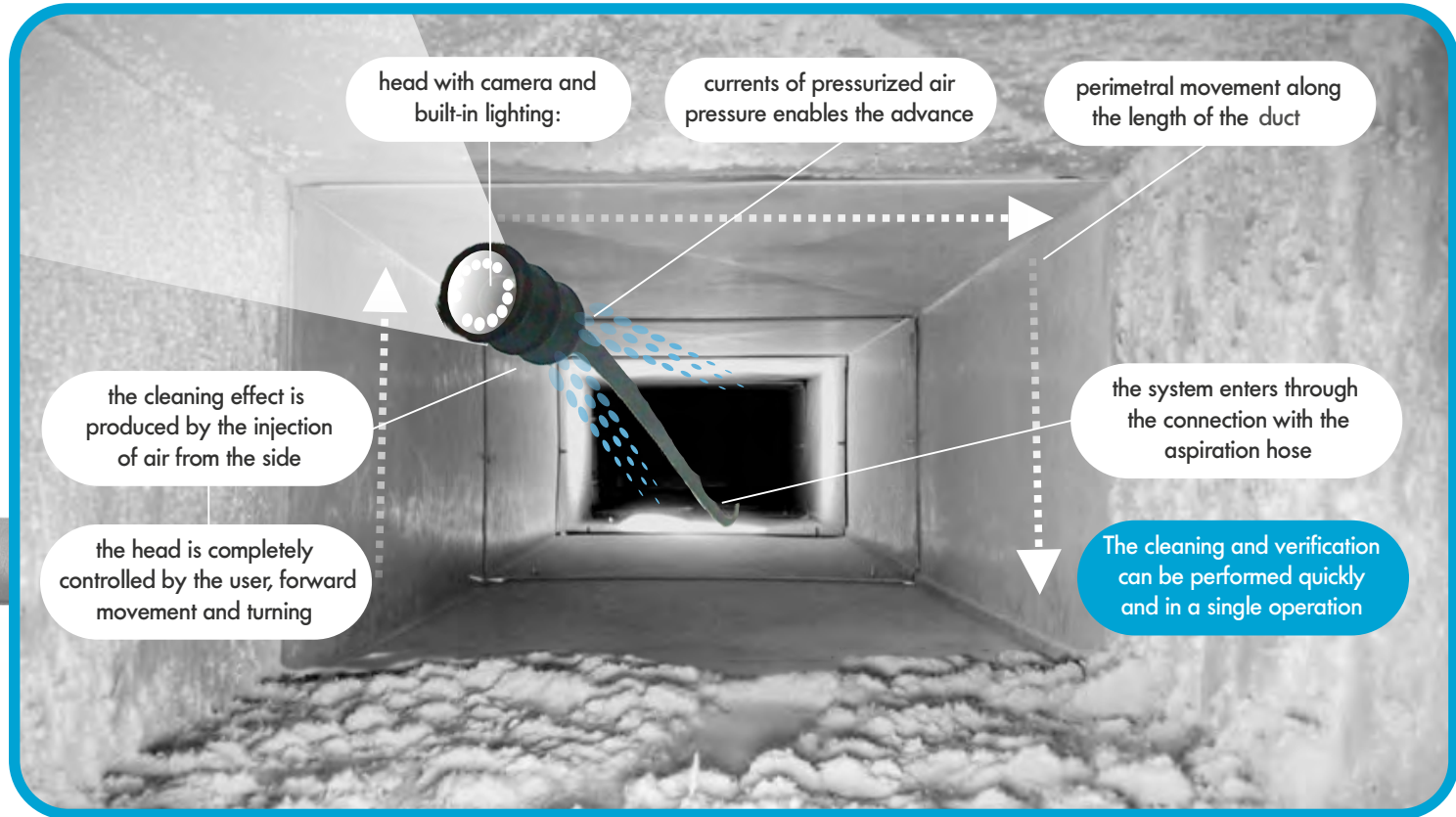
### TECHNICAL FEATURES

Power supply	220 V / 50Hz 110 V / 60Hz
Working compressed air power (Blind nozzle)	400l./min a 8 bar 14 cfm / 116 psi
Working compressed air power (Smart nozzle)	800l./min a 8 bar 28 cfm / 116 psi
Control	Manual electro pneumatic and remote control
Sound level	< 70 Db
Video inspection system	HD camera with LED lighting
Recording system	Digital recorder
Hose length	2 X 15 mts 2 X 49 ft
Dimensions L x W x H	600 x 520 x 1200 mm 23,5 x 20,5 x 47 inch
Weight	45 Kg / 99 Lb



# How does it work?

# visioair





# AR100

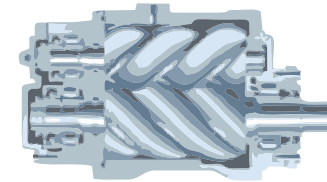
## AIR COMPRESSOR

### Cubed power

The only partner for your Visioair when you need huge volumes of air, continuously. It doubles the weight and dimensions of other screw compressors, but offers FIVE TIMES the air, up to 1050 l/s, and only emits 67 dB!

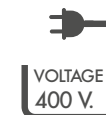
### Technology

It is one of the few compressors with a digital display and EasyTronic membrane panel for controlling all functions. The display shows the working pressure, the hours of work, the load level and oil temperature. Remote on and off function.



### TECHNICAL FEATURES

Electric power	400 V / 50Hz
Power (10 Bar)	110 kW – 15 Cv
Rated Pressure	10 bar – 145 Psi
Air output (10 bar)	1050 l/min
Sound level	67 dB
Control panel	Membrane Keypad
Air cooler	Electric
Outer structure material	Stainless Steel
Dimensions	L x W x H 570 x 630 x 800 mm 22,4 x 24,8 x 31,5 inch
Weight	93 Kg / 205 Lb



## EFFECTIVE DUCT CLEANING

The inside of air-conditioning ducts accumulates large amounts of dust, and cleaning robots have been designed to achieve rapid, effective cleaning in the complex pathways of the ducts, removing dirt from the surfaces to suck it up at the same time with the vacuum systems.

# 05



brushing systems

# rotair



## Brushing through intelligent flexible shaft

Rotair is the ideal compact solution for small and medium size jobs. An electric brushing solution, in its latest version incorporates the unique system that prevents the breakage of the shaft, ProAxis.

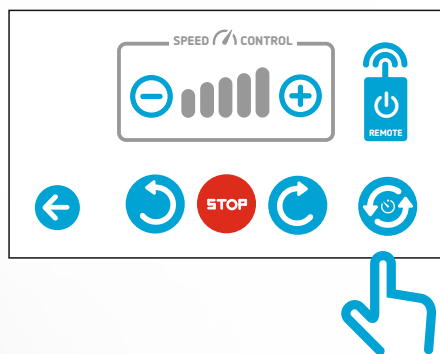
## ProAxis

**ProAxis** is an innovation of our R & D Department, responding to a need in the air duct cleaning market, to avoid multiple breakages of the rotating flexible shaft. Teinnova has implemented a revolutionary central control, capable of detecting the type of duct, and apply the required force without forcing the shaft. It also incorporates the **StopGo** system that stops the motor before any eventuality avoiding its breakage.





Remote control



### Total Control in One Finger

Unique in its category, featuring the **EasyTouch**, touch screen system from where in addition to controlling the equipment, we can visualize various parameters such as:

- Revolutions per minute
- Visual chart of speed
- Display of the machine manual in PDF format from the screen
- The control of rotation time to the left and right



### TECHNICAL FEATURES

Power supply	220 V / 50Hz 110 V / 60Hz
Rotation speed	0 - 1.500 r.p.m
Shaft length	20 mts / 65 ft
Construction material	Stainless steel and aluminum
Control panel	Touchscreen
Weight	58 Kg / 128 Lb
Dimensions	L x W x H 750 x 420 x 890 mm 29,5 x 16,5 x 35 inch



# element<sub>auto</sub>



## Maximum demand

Solutions for air duct cleaning are many, but when you need strength, power, reach larger diameter ductwork and work in continuous without sacrificing efficiency, only then we can be talking about Teinnova's pneumatic solutions for cleaning air ducts.

## Higher power

The system uses compressed air to power an engine housed in the tip of a 25 meter long flexible hose. It is the most reliable and robust tool for air duct cleaning.

Thanks to its power and strength, it is the most appropriate solution for the cleaning of large ducts, or for medium and big jobs, when it comes to cleaning many meters of duct.

## Why Tecai Element?

Because the Air-Flow compressed air injection system, through its head improves the volatility of dirt helping in brushing and lifting the more resistant particles.

Because of its aluminum structure, it doesn't "weigh you down" when you take it wherever you need it.

Because the DUO system in the Tecai Element Auto version automatically changes the direction of rotation, left or right.





Pneumatic engine

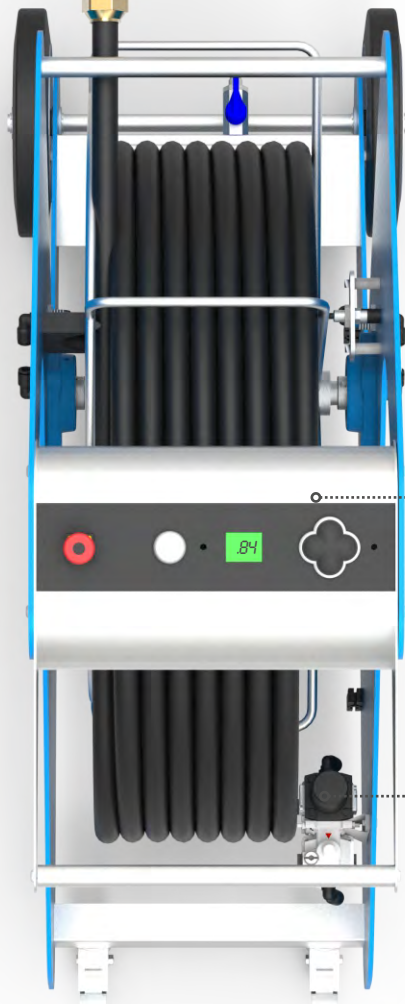
Air-Flow compressed air injection system



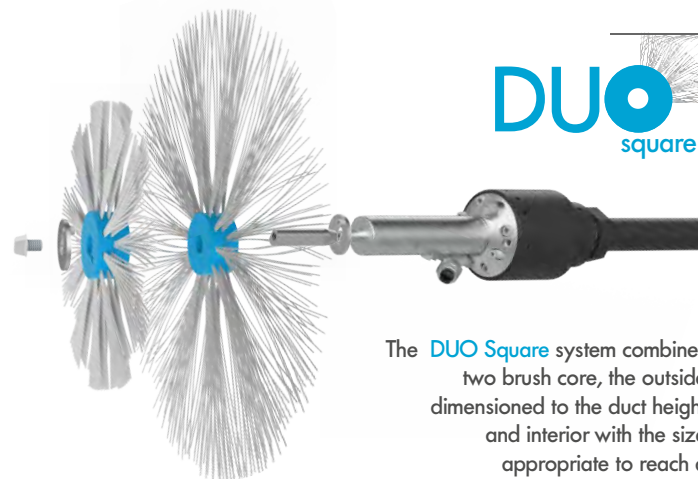
Remote control

Control panel

Lubrication system of pressurized air



Top view of machine



The **DUO Square** system combines two brush core, the outside dimensioned to the duct height and interior with the size appropriate to reach a effective brushed the corner

### TECHNICAL FEATURES

Power supply	220 V / 50 Hz 120 / 60Hz
Engine power supply with pressurized air	220 l/min a 8bar 8 cfm / 116 psi
Par drowing	2,5 Nm
Speed of rotation	762 rpm
Hose length	20 mts / 65 ft
Material structure	Stainless steel and aluminum
Control system	Electropneumatic
Weight	64 Kg / 14 lb
Dimensions	L x W x H 1070 x 440 x 1100 mm 42 x 17 x 43 inch



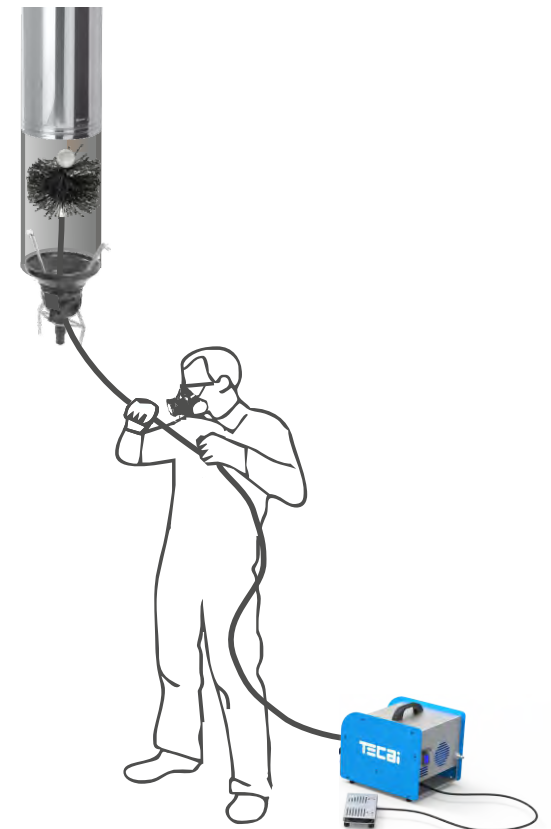


# CHIMNEY SWEEPING

Soot and other solid particles produced during stoves, boilers and chimneys combustion, are deposited over smoke extraction duct walls.

These deposits reduce the shot of the chimney, causing a decrease of equipment performance and increasing energy consumption.

Dirty ducts produce also bad smells and increase burning risks.



# protub



brushing systems



## Traditional Job Revolution

Chimney sweep work is one of the most old and traditional job in the world. Does this mean that it is impossible to innovate, to facilitate its performance? Of course it is possible, with Protub.

## Polyvalent

With Protub you can not just offer chimney and duct sweeping service, but also it allows interior duct cleaning, inside heat interchangers, and pyrotubular boilers as well as aquotubular.

## Chimney Sweeper Tool

Protub is chimney sweeper ideal tool, to eliminate effectively and without effort soot and other solid particles, produced during combustion, avoiding fires or carbon monoxide contamination.

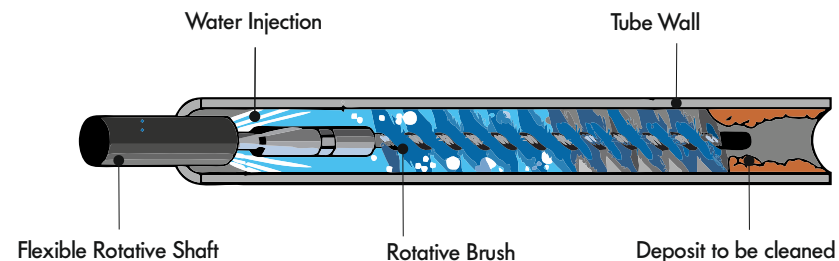




# TUBE CLEANING INSIDE HEAT EXCHANGERS UNITS

Heat exchangers are designed to transfer heat between two tubular ways, where fluids leave dirt incrustations. It is important to keep tube interior clean, to get an optimal performance, and avoid economic losses.





## Without Effort

Sweeping and tube cleaning works, have been always difficult and hard to be executed. Thanks to Protub innovations, like double sense turn, adjustable speed, waterflow injection technology, or remote control tube difficult cleaning works can now be executed in a more efficient, safe and fastest way.



## TECHNICAL FEATURES

Power Supply	220 V / 50Hz 110 V / 60Hz
Engine Power Control	1 HP / Electrical Variator
Shaft Rotation	Double sense left /right
Shaft Rotation Speed	Variable 0 to 900 rpm
Remote control	Wireless 20 meters reach
Construction Material	Stainless Steel and HDPE
Control Panel	Membrane Keyboard and digital display
Total weight without shaft	14 Kg / 31lb
Dimensions	L x W x H 359 x 216 x 393 mm 14 x 8,5 x 15,5 inch



## POWERFUL SUCTION IS VITAL FOR THOROUGH CLEANING

To retain all the dirt from the ducts stirred up by the cleaning equipment, you will need a powerful suction system which ensures that the dirt gathered up cannot contaminate the interior of the buildings. HEPA guarantees that 99.9% of particles remain trapped in the inside

# hepair

## Do you need an effective vacuuming?

Hepair 2000 is the solution. The system collects, filters and traps all particles loosened by brushing and air injection systems.

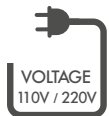
Its powerful vacuum engine absorbs all particles raised and these are held inside the filters, thanks to its system of decantation and filtration.

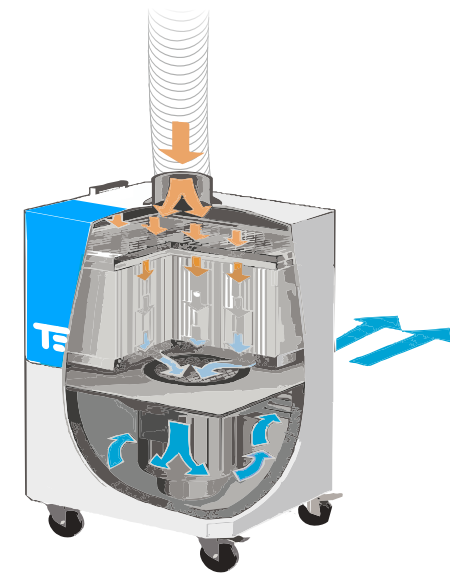
## How does it help you?

Gets to where you need it. Thanks to your 5 meter hose with telescopic supports you can reach all ducts regardless of their height.  
100% Filtration. With the three stages of filtration, and your HEPA absolute filter, no particle will escape you.

## Why HEPAIR?

- Because its design, compact and sturdy with wheels and side handles, allows you a better portability.
- Because it allows you more control thanks to the operating hours counter.
- Because it has an acoustic indicator of filter saturation that will allow you to know their condition and the need to change them, thus avoiding a waste of time.
- Because it has a pack of three filters to achieve a perfect filtration (Pre Filter + Bag Filter + Main HEPA Filter).





## TECHNICAL FEATURES

Power Supply	220 V / 50Hz 110 V / 60Hz
Flow rate and maximum depression	2000 m <sup>3</sup> /h 1500 CFM
Three filtering level	G4 filter F9 Medium filter HEPA H14 filter
Noise level	72 Db
Total weight with filters	80 Kg / 176 Lb
Dimensions	L x W x H 580 x 580 x 900 mm 22,8 X 22,8 X 35,4 inch





## THE POWER OF ACTIVE FOAM

Air conditioning coils are the most sensitive parts to the accumulation of dirt and germs in their interiors, due to the many complex spaces that they contain. Besides this, any water condensation produced by changes in temperature encourages the growth of mould and bacteria. All the pressurised air must pass through this device, leading to a loss of pressure due to the blockage of the accumulated dirt. We have specific equipment and products for this major problem which provide an effective solution for the cleaning of air-conditioning coils.

# coilbox

## Why Coilbox?

Because there is nothing else like it on the market for the effective cleaning of the delicate coils of air-conditioning systems, both for external "condenser" units, and interior "evaporators" (splits, fancoils).

This innovative system consists of two complementary modules, the main "coilbox" module, which contains all the technology for the injection of active foam and water for rinsing, taken from the mains water supply.

The other "waterbox" module is a tank holding 30 litres of water, for use when there is no connection to the water supply.

Both modules together make for a completely autonomous piece of equipment, regarding water and electricity, thanks to its rechargeable battery.

## How can it help you?

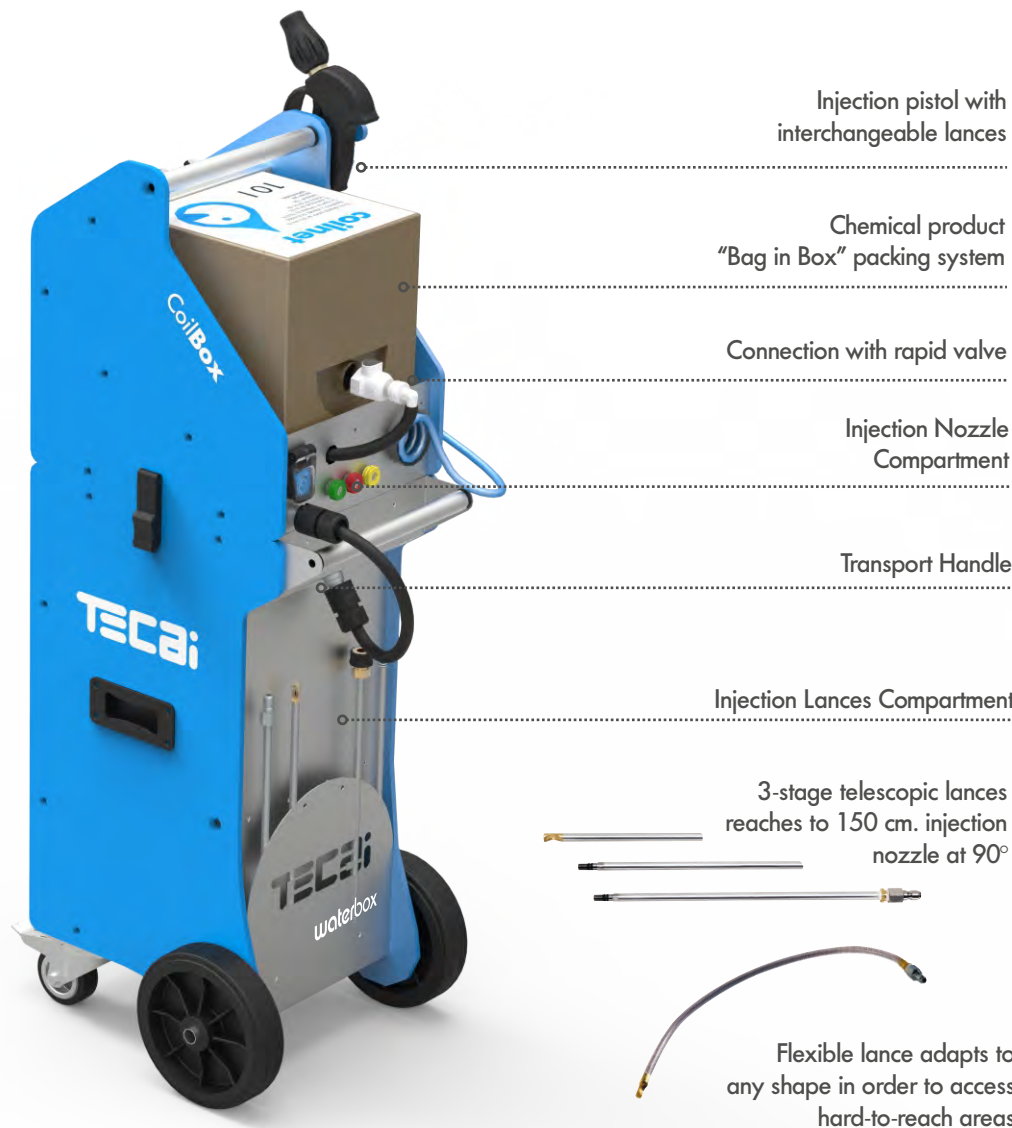
From the first cleaning. Show your clients the ENERGY SAVINGS due to serpentine cleaning and keeping them in perfect work conditions.

Power? Just as much as you need. It is a common mistake to think that more Power is better. Its 7 bars of pressure provide just the right amount to clean the panels of the coil without bending them. Its autonomy allows you to work continuously to do not stop at work.

There are extendible and flexible lances to reach the most difficult areas without disassembling the whole air-conditioning unit. It includes nozzles for product injection and for rinsing at different degrees of pulverisation.

A compact, light system with a totally functional design and specific sockets for the many accessories.





### TECHNICAL FEATURES

Power supply	by a rechargeable electric battery
Voltage	12 V / 7 Amp.
Output pressure	7 bar a 2 l./min
Rechargeable chemical product	10 l. Bag in box
"Waterbox" water tank	30 l. Modular
Structure material	Stainless Steel Aluminium
Dimensions	L x W x H 300 x 250 x 920 mm 11,8 x 9,8 x 36,2 inch.
Total weight of equipment when empty	30 Kg / 66 Lb



# 08

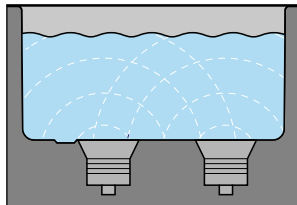
## ULTRASOUND CLEANING SYSTEM FOR GRILLES AND DIFFUSERS

### ULTRASOUND CLEANING

Ultrasounds are waves transmitted at frequencies which in general are beyond the range detected by human ears, and in some applications (sonic system) can be used to clean materials and pieces.

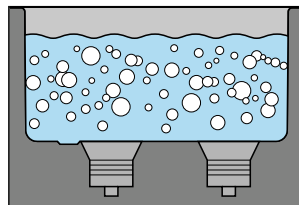
It works like this:

1



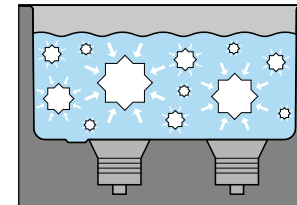
As the sound waves emitted by the transducers spread out in the solution with water and the chemical product in the tank, they produce alternating high and low pressure in the solution.

2



Millions of microscopic bubbles are formed and expand in the low-pressure stage. This process is known as CAVITATION, which means "formation of cavities".

3

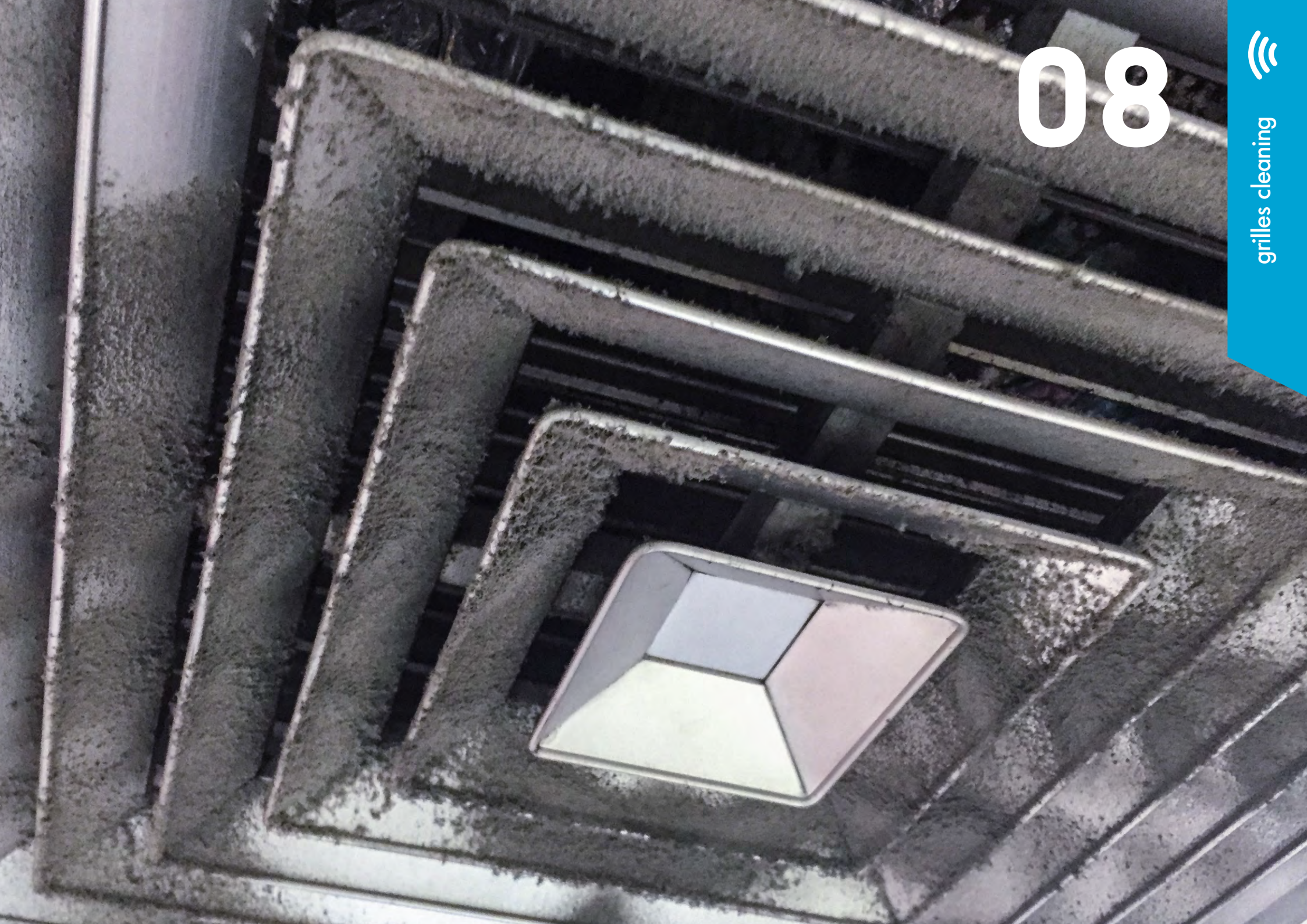


The bubbles collapse and implode in the high-pressure stage, releasing enormous amounts of energy. These implosions act like a small army of tiny cleaning brushes. They work in all directions, attacking all the surfaces and invading all the hollows and apertures.

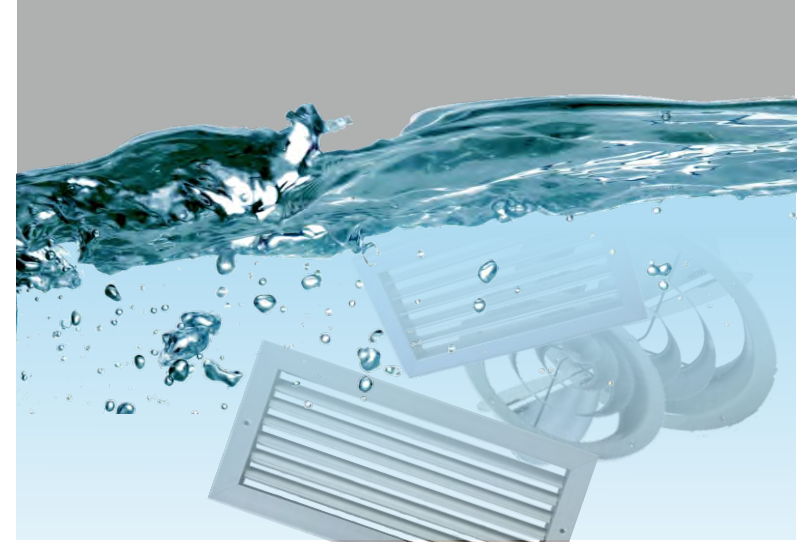
08



grilles cleaning



# dinet



## Why Dinet Ultrasonic?

Because you can offer a different, effective service which saves you and your clients time and money.

Besides the Ultrasonic technology, it cleans air-conditioning system grilles and diffusers faster than anything else. The ultrasound module is portable and dismantlable, so you can decide when to use it.

It is portable, with wheels, and small enough that you can move the equipment anywhere in the installation.

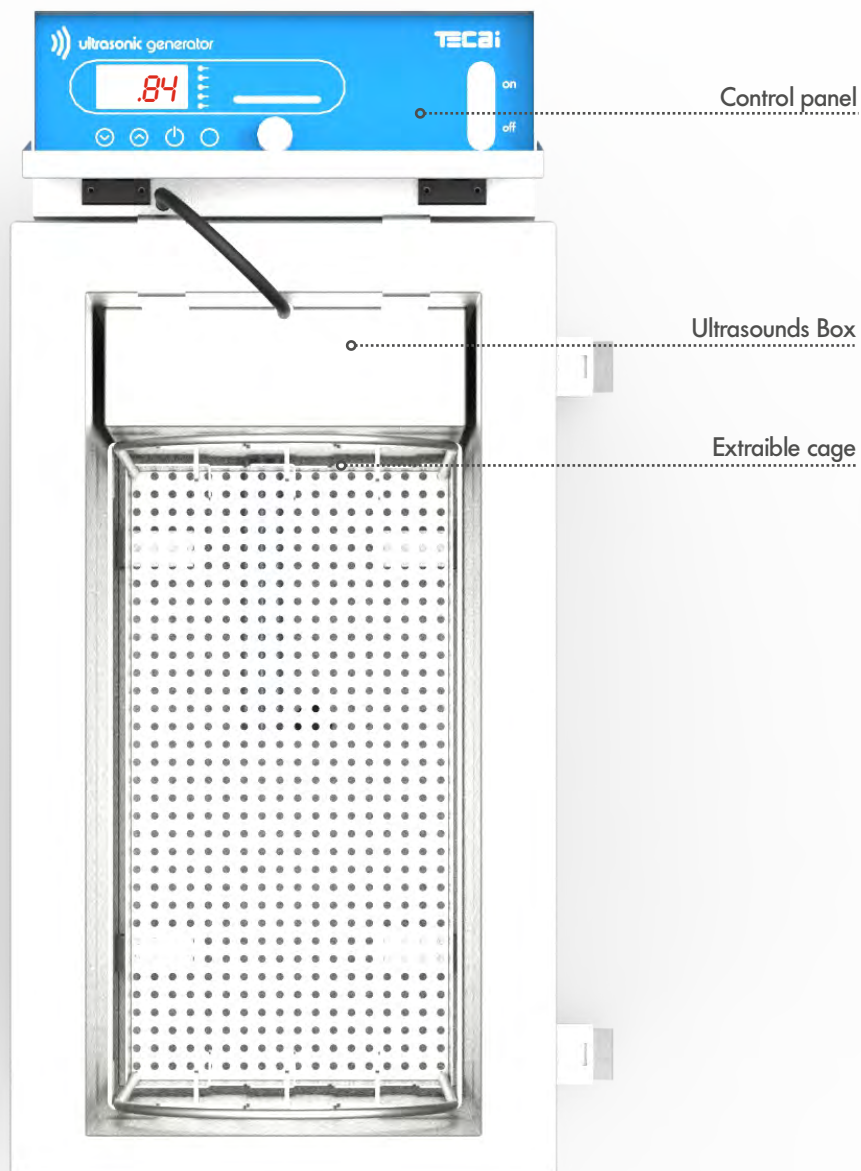
## How does it help you?

The innovative ITP (Intelligent Temperature Prediction) saves up to 30% more electricity than other systems, making cleaning more profitable.

The ultrasounds, together with hot water (up to 90°) and Dinet Foam detergent achieve effective cleaning of grilles and diffusers in record time.

This all adds up with Dinet Ultrasonic into savings of time and consumption. Savings for you and your clients.

The Sweeper System technology allows you to regulate the power, bandwidth and speed of ultrasounds to personalize each clean as needed.



## TECHNICAL FEATURES

Power supply	220 V / 50Hz 110 V / 60Hz
Ultrasound power	900 W
Ultrasound generator	Regulable SWEEP SYSTEM
Control panel with regulation	Power
	Speed bandwidth
Heating power	2000 W
Structure material	Stainless Steel
Total weight with cage	70 Kg / 154 Lb
Outer dimensions L x W x H	875x350x830 mm. 34,4x13,7x32,6 inch.
Inner dimensions L x W x H	525x290x555 mm. 875x350x830 inch.
Nominal volume of the tank	80 Liters. / 21 gal.





## INVISIBLE DANGER REMOVAL

It may be necessary to completely disinfect the air-conditioning system after cleaning up the dirt to guarantee a thoroughly hygienic installation. We have the most effective and versatile equipment, especially designed to decontaminate ventilation and air-conditioning systems.



# desinair



## TOTAL intelligent disinfection

Not all disinfection systems are equal. Desinair with its powerful and singular Biocide is the most important disinfectant when faced with bacteria, viruses and fungus.

In cases of extreme disinfections, Desinair is the solution. It is designed to remove pollutants throughout the entire length of complex ducts, and to completely disinfect clean rooms, plants and food warehouses, silos, in short any place that requires a total disinfection with guarantees.

## Why DESINAIR?

Combined with the wide spectrum Biocide Terminal, it is the most effective weapon to eradicate pathogens such as Listeria, Salmonella, Escherichia Coli, Staphylococcus aureus, or Aspergillus among others.

Because its use is as simple as pushing a button and letting it work.

Its action reaches the most difficult places to access, such as a network of ducts, thanks to its high spectrum disinfectant fog.

Programmable. It allows you to program the beginning of the disinfection, permitting you to abandon the premises for the total safety of the technicians.

## TECHNICAL FEATURES

Power supply	220 V / 50Hz
Control panel	Digital electronic timer
Chemical product deposit	5 Liters
Structure	4 wheels steel container
Empty weight	15 Kg /33 Lb
Dimensions	L x W x H 400 x 400 x 600 mm. 15,7 x 15,7 x 23,6 inch

# ozoair

## Do your customers ask you to also disinfect their ducts?

You can now offer a complete, fast and effective disinfection service with the intelligent ozone generator, Ozoair.

An intelligent system thanks to its exclusive technology ADA (Activate and Deactivate Awareness), by which it not only creates the ozone for disinfection, but it also deactivates it, leaving the disinfected sites ready to be occupied immediately.

## Why OZOAIR?

Decomposition of residual ozone in oxygen allows for the immediate reoccupation of the site with total SAFETY.

As simple as pressing a button and letting it work.

Adaptable to the size of the room and the necessary time to work.

Programmable. It allows you to program the beginning of the disinfection, permitting you to abandon the premises for the total safety of the technicians with sound and light indicators that show the start and end of the process.

Unique in integrating a room size selector, to suit every need.

Emission hose, adaptable to any duct



## TECHNICAL FEATURES

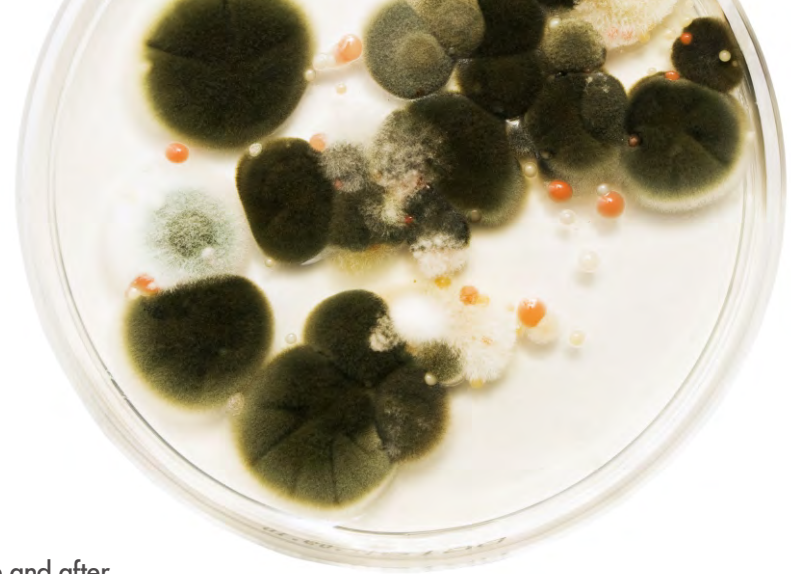
Power supply	220 V / 50Hz
Control Panel	Adaptable digital timer
Ozone generation (O <sup>3</sup> )	12 grams/hour
Structure	Aluminium and ABS
Weight	32 Kg / 70,5 Lb
Dimensions	L x W x H 500 x 450 x 750 mm 19,6 x 17,7 x 29,5 pulg



# 10



# microbio



## Precise measurement of Colony Forming Units

The NADCA standard establishes a compulsory measurement of Colony Forming Units (CFU), both before and after cleaning, as well as before and after the disinfection of air ducts. These measurements are really important, for compliance with the regulations, and to determine when you should undertake cleaning and disinfections.

## How does it help you?

It allows you to extend and complement your range of air-conditioning cleaning systems, with the tool of microbiological measurement.

Quantitative measurement, both in internal and external environments.

The air is sucked through a removable head, with a series of holes of 1 mm in diameter at a rate of 100 liters per minute.

In just 7 minutes! Microorganisms are collected on the surface of a plate, which is extracted, incubated and make a count of grown colonies in the ambience. The count, along with the volume of air sampled, is used to calculate the number of Colony Forming Units (CFU) per cubic meter of air.

### Accessories included

- 1 x Transport case.
- 1 x Software PC Reporter
- 4 x Rechargeable batteries.
- 1 x Battery charger
- 1 x Head micro perforated



## TECHNICAL FEATURES

Power supply	4 xAA NiMH battery
Battery duration	4 hours
Display	LCD color 3,5"
Air volume	From 25 to 2000 l.
Support plates	Petri Plates 55 and 3.5 inch
Average flow speed	100 l/min.
Construction	ABS shell
Head	Stainless steel micro-perforated
Dimensions/weight	L x W x H 195 x 100 x 40 mm/480 gm 7,7 x 4 x 1,6 inch / 1 Lb

## Precise measurement of the particles in suspension

The NADCA standard establishes the obligation to measure the particulate material on the surface (inert dust and fibres) of air-conditioning systems. The inspection and analysis points indicated by the regulations are input, exhaust and extractor air. Readings must be taken before and after cleaning. These readings are really important, to comply with the standard and to tell when the cleaning is needed.

## How does it help you?

It allows you to extend and complement your air-conditioning cleaning service with a tool for measuring particles. The particle reader uses laser technology to detect the smallest contaminants in the air, ranging from 0.3 µm to 5 µm. Its full-colour screen enables 3 particle sizes to be observed at the same time. It is very light so it can be transported wherever you need it, provides reliable results and is very easy to use. All the data collected can be transmitted later to a computer with a usb cable for analysis.

### Accessories included

- 1 x rigid case
- 1 x isokinetic probe
- 1 x USB data cable
- 1 x zero filter
- 1 x software
- 4 x AA batteries
- 1 x charger



### TECHNICAL FEATURES

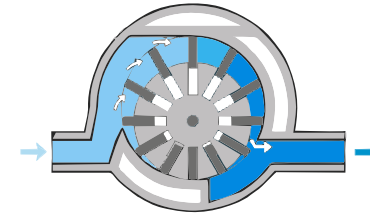
Power supply	4 x AA NiMH Battery
Battery duration	4 hours
Display	LCD color 3,5"
Count rate	0,3 µm/ 0,5 µm y 5 µm
Light source	Laser Diode (duration 30.000 h.)
Measurement modes	Individual / Adjustable Remote / ISO
Internal memory	8000 values
Dimensions/weight	L x W x H 178 x 90 x 48 mm / 480 gm 7 x 3,5 x 1,8 inch / 1 Lb



# AR20

## The perfect air source

Pressure, pressure and more pressure! This is what your Teinnova pneumatic equipment needs. The AR20 is your perfect partner when you need all the force of compressed air in your Tecai Element or Element Auto equipment. Its exclusive paddle technology offers an enormous volume of air and pressure with a considerable reduction in noise when compared with other systems.

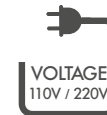


### "Paddle" System

A patented system of sliding "paddles" which produce a large volume of air and high air pressure. Self-cooling, it can operate for 24 hours at a time.

## TECHNICAL FEATURES

Power supply	220 V / 50 Hz 120 V / 60Hz
Power (10 Bar)	2,2 Kw – 2,96 Cv
Rated pressure	10 bar – 145 Psi
Air output (7 bar)	240 l/min 8,47 cfm
Noise level	67 dB
Refrigeration	Self-venting
Outer structure material	Stainless Steel
Dimensions	L x W x H 803 x 390 x 723 mm 31,6 x 15 x 28,4 inch
Weight	50 Kg / 110 Lb



# RELATED TOOLS AND PRODUCTS

We have all types of useful accessories specifically designed for the jobs to be done, such as: cutting tools for ducts, standardised manhole covers, brushes of different materials and sizes, individual protection equipment and for environments, and all the chemical products to be used with all the equipments.

[Request our full catalogue](#)



Retaining filters for dust



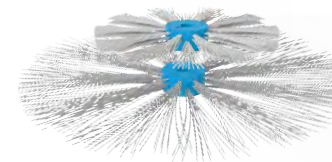
Access Doors for ducts



Cutting tool for ducts



Elements to cover grilles and diffusers



Brushes of different measures and materials



Personal protective equipment



Hoses and accessories for compressed air



Chemical products for use with the equipments



Portable inspection systems and other related equipment





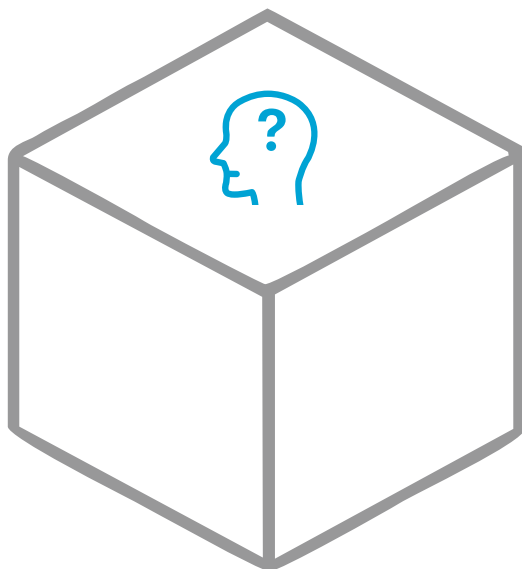
de formación  
training room



11



training plans



## ALL THE TRAINING YOU NEED

Technology without control is not much use. This is why we offer you the best training plans to make the most of your business.

We have made to measure plans in different formats, enabling you to choose between a distance course in our facilities or the "In Company" system which may include a real qualified clean up to put the lessons into practice.

### YOUR GOALS ARE OUR TARGETS

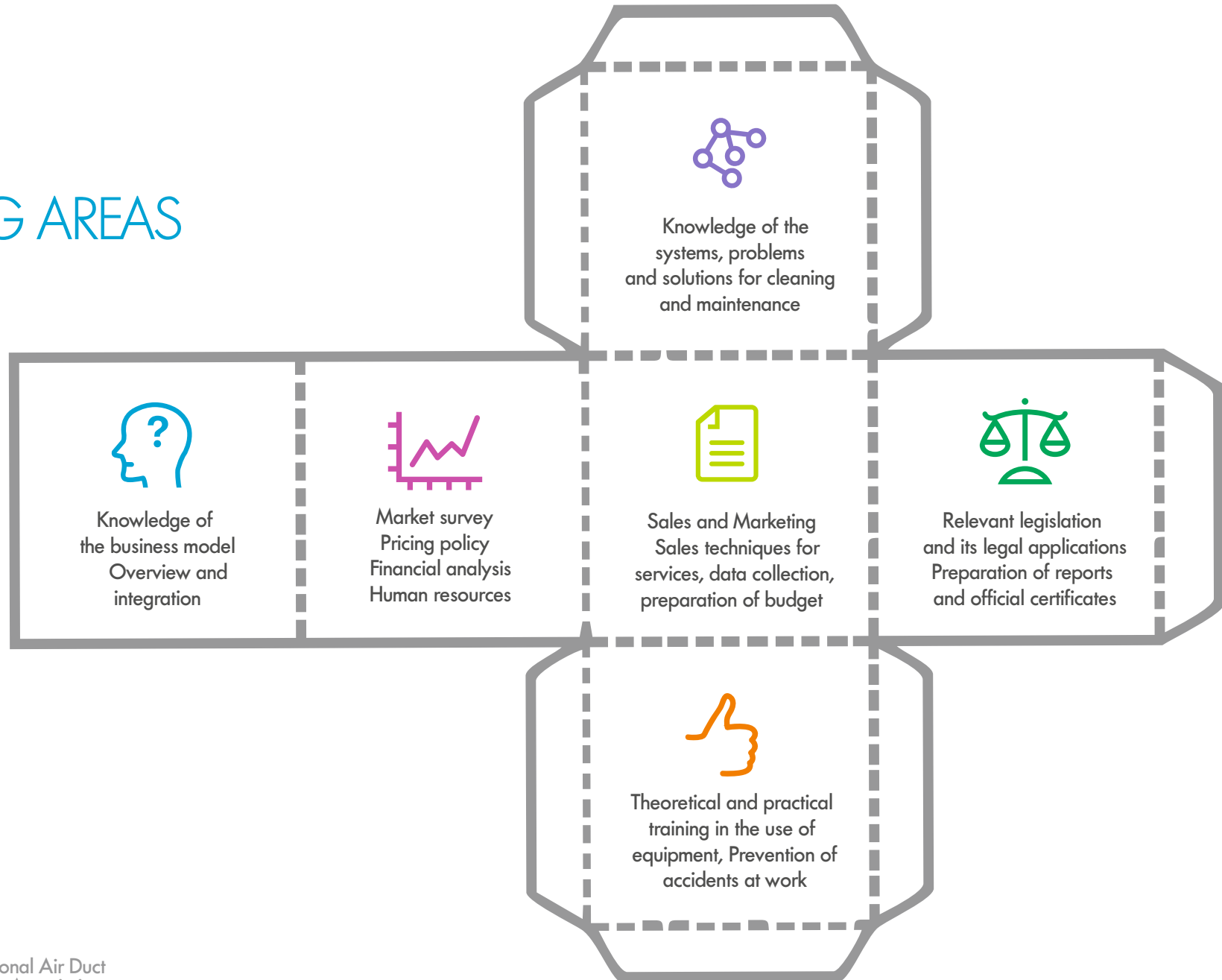
Our trainers have plenty of experience in this field, and can provide the guidance you need in any area of your project, so that you can get the maximum benefit from your business from the start.

You can also access the continuous training plans that we prepare throughout the progress of your project, so you can update your knowledge of how this business model changes over time.

Don't worry - we will be with you throughout the whole process!



# TRAINING AREAS



# INNOVATIVE SOLUTIONS FOR YOUR BUSINESS

We have always had a clear idea of what we offer our clients. From the start, Teinnova set out to develop solutions that make technical cleaning tasks easier for our clients, as well as a profitable business model.

We develop and manufacture equipment for technical cleaning in different areas, as well as specific methodologies for using them through customized training courses for each business model.



**TEGRAS**  
concept

Complete equipment  
for cleaning smoke  
extraction systems in  
industrial kitchens



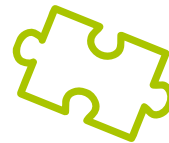
**TECAI**  
concept

Complete equipment for  
cleaning and sanitizing  
air-conditioning systems



**TELAB**  
customized  
solutions

Customized solutions  
for industrial  
technical cleaning





**TEiNOVA**  
passion for innovation®

INTERNATIONAL PRESENCE



IN-HOUSE MANUFACTURING



TECHNICAL SERVICE



INNOVATION



TRAINING



SHOWROOM



HEAD OFFICE: Logroño (Spain)